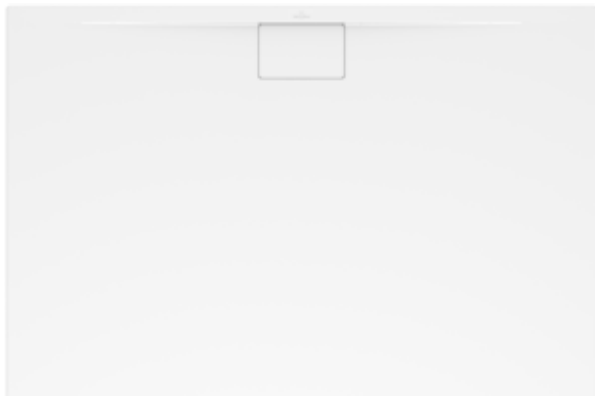


ARCHITECTURA RECTANGULAR SHOWER TRAY RECTANGLE

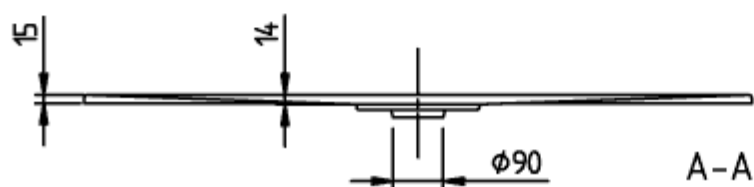
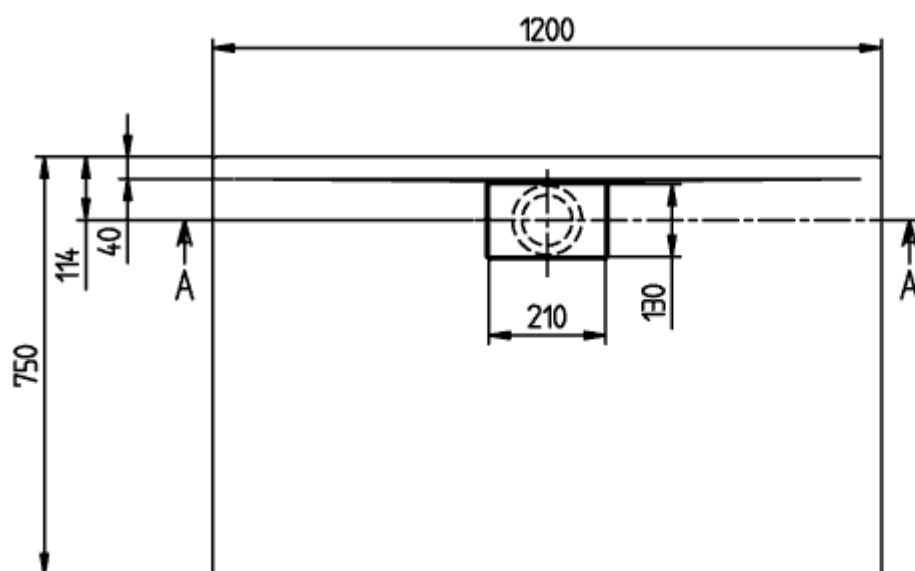
PRODUCT INFORMATION



Article title	Villeroy & Boch Architectura Rectangular shower tray, 1200 x 750 x 15 mm, White Alpin
Article number	UDA1275ARA215V-01
Assembly / Assembly type	Surface-mounted, Corner installation[flush-fitting installation] Installation on a base
Assembly instructions	With MetalRim and an edge height of 15mm, we recommend the use of a composite seal in accordance with ETAG 022 on the floor structure below the shower tray in order to prevent any moisture from penetrating the floor structure., From size 1400 x 900, two supports (U82990000) are required.]The installation height of the shower tray can be reduced by 30 mm if the Viega outlet fitting art. no. 634 100 is used. Please note: this outlet fitting does not conform to EN 274.
Scope of delivery	1 x rectangular shower tray , 1 x outlet cover in White Alpine (01), for matt colours, outlet cover in matching matt colours.
Length in mm	1200
Width in mm	750
Height in mm	15
Interior depth	14
Collection	Architectura
Material	Acrylic
Colour name	White Alpin
Other material	Outlet cover: Acrylic
Other surfaces	Outlet cover: glossy
Shape	Rectangle
Colour designation	White Alpin
Other colour designations	Outlet cover: White Alpin
Antibacterial surface (with AntiBac)	No
Easy surface cleaning (CeramicPlus)	No
With slip resistance	No

TECHNICAL DRAWINGS

UDA1275ARA215V-01



ARCHITECTURA METAL	V
RIM 1200x750	
UDA1275ARA215	
V02 / 31-03-2021	

UDA1275ARA215V-01

